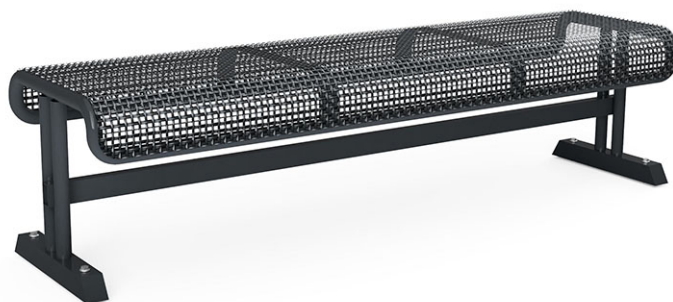


Steel lattice bench Situra

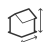




Article 84650

Steel lattice bench made of woven wire mesh, length 170 cm, without backrest, steel construction hot-dip galvanised and additionally lacquered in RAL 7016.



CHF 930.-

(excl. VAT)

 Device dimensions	172 x 47 x 43 cm
 Heaviest element	30 kg
 Biggest element	170 x 47 x 43 cm
 Assembly time	1 h
 Installers	2

