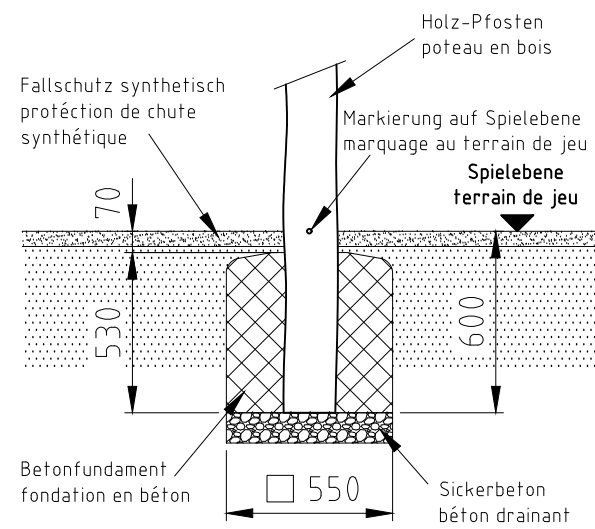
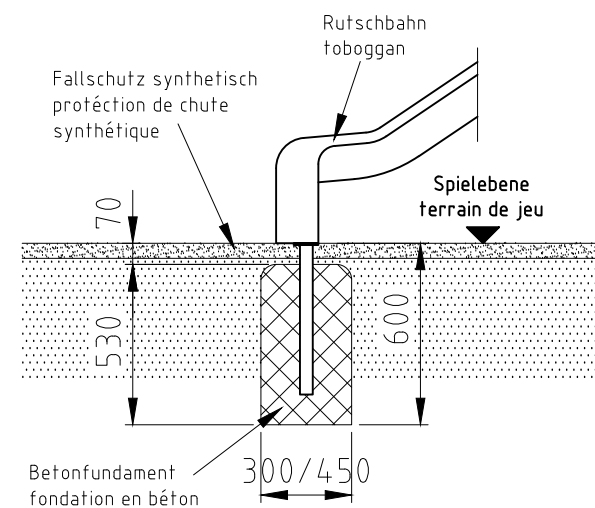


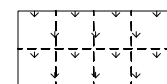
### Fundament F01



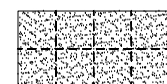
### Fundament F09



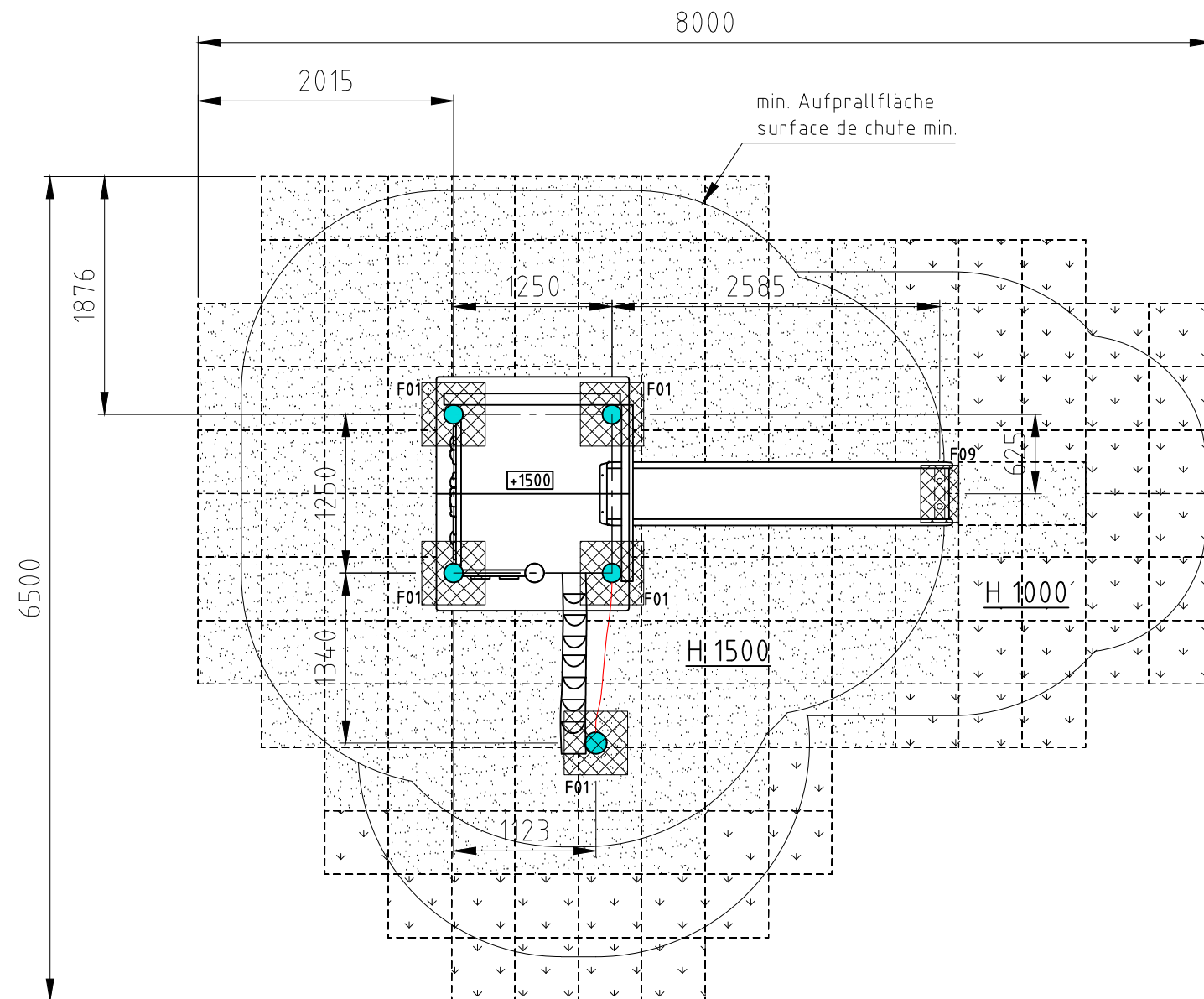
H= Fallhöhe  
H= espace de chute




Aufprallfläche 0-100cm  
espace de chute 0-100cm



Aufprallfläche 0-180cm  
espace de chute 0-180cm



Norm: SN EN 1176-1:2018 SN EN 1177:2018	Datum	Name	Objekt:
	Gez 25.02.2021	sa	42502-001-s Spielturm-Kombination
	Sachbearbeiter		Auftraggeber:
 Spiel- und Sportgeräte AG CH-6212 St. Erhard Tel 041 925 14 00 info@buerli.swiss	synthetischer Fallschutz / protection de chute synthétique		Fundation
	Offerte/Auftrag:		Zeichn.-Nr.: 116576